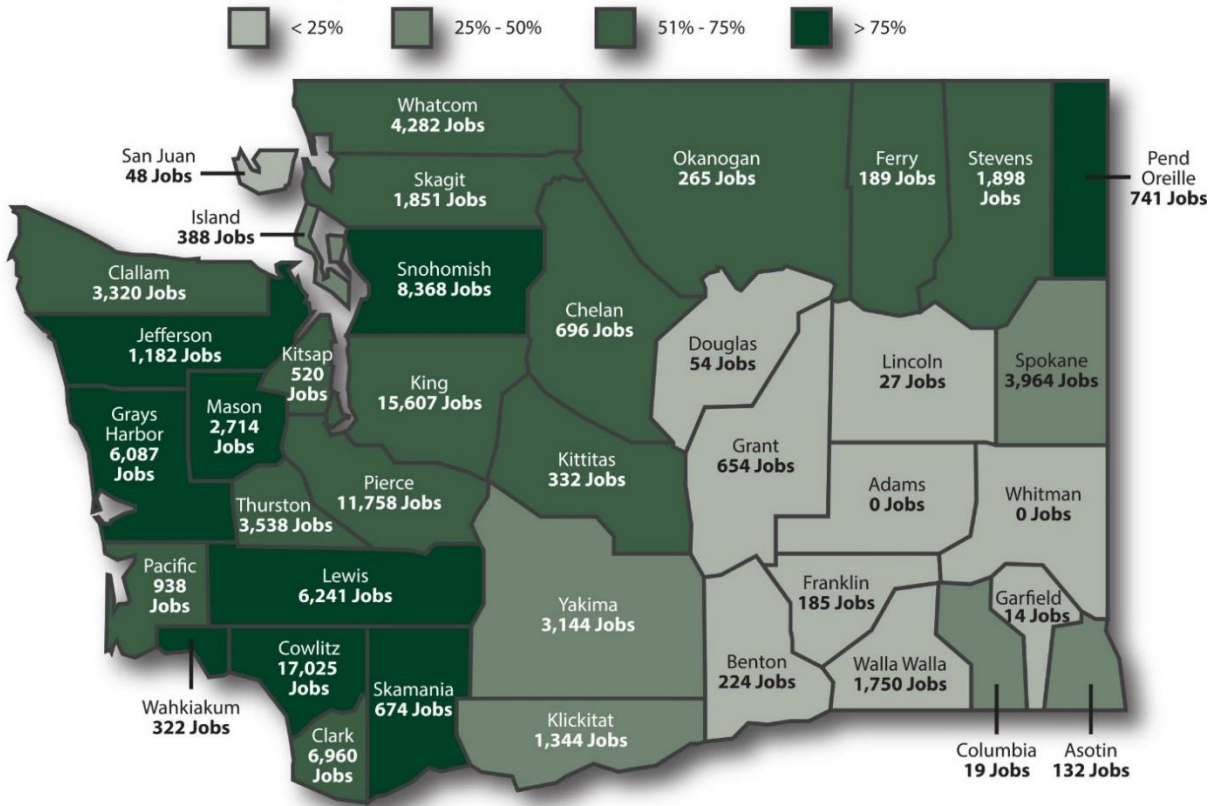


Forest Industry Economic Impact

107,000 jobs and \$4.5 billion in wages (2011)

Percentage of County that is Forestland



Washington State Working and Restricted Forest

WASHINGTON STATE FORESTLAND and ECONOMIC IMPACT

Working Forests (47%):

Private-State-Tribal-County	10,214,092
Federal	660,643

Restricted from harvest (53%):

Private-State-Tribal-County	2,567,398
Federal	9,541,306

Total Forestland Acres **22,983,438**

Total jobs (direct, indirect and induced) **107,455**

Wages **\$4,455,996,258**

Taxes & fees **\$175,264,618**

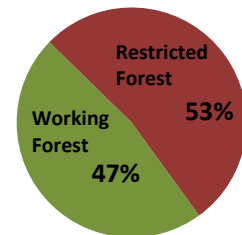
MOST OF ECONOMIC IMPACT IS FROM NON-FEDERAL FORESTS

Private-State-County-Tribal Forest:

Working Forest	80%	10,214,092
Restricted (Set-aside from harvest):	20%	2,567,398

Total Private-State-Tribal-County **12,781,489**

Washington State Forestland 22,983,438 acres



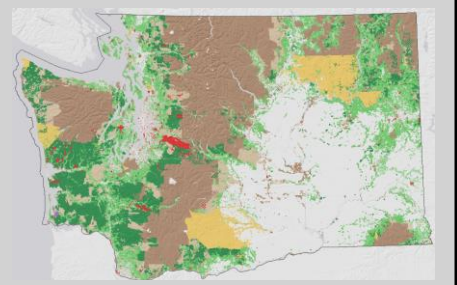
- One-half of Washington State is forested.
- 47% are working forests providing environmental and economic benefit.
- 53% of forests are restricted from harvest by local, state and federal law.
- 97% of harvest is from non-federal lands.

Washington State

More than half of the state is forested - (22,983,438 ac.)

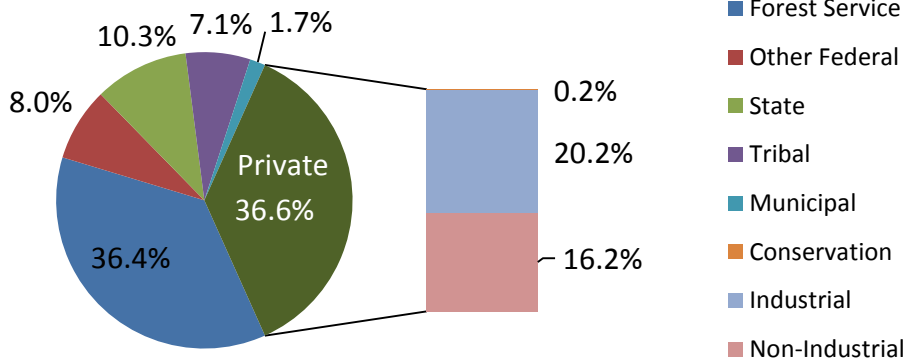
\$4.5 Billion in Wages and \$175 Million in Taxes are paid annually in Washington by the Forest Products Industry

Washington's 2012 Timber Harvest Volume is Equivalent to more than 411,000 homes



Working forests provide economic and environmental benefits

Total Forested Acres 22,983,438



Rural counties are light green and have a population density of less than 100 persons/sq. mile (WAOFM)

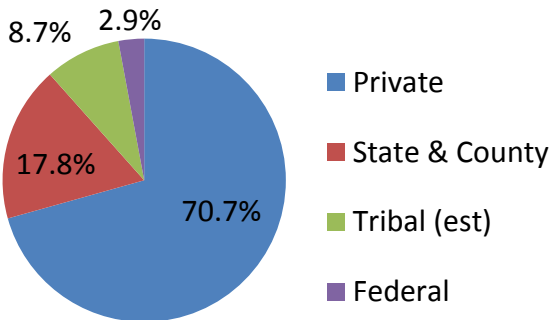
Washington State is the 2nd Largest Lumber Producer in the Nation

83% of the total timber harvest and 52% of the timber industry jobs are in rural counties.

2011 Timber Ind.	State Total	Rural Counties Total	% of State
Direct Jobs	39,732	20,515	51.6%
Total jobs	107,455	56,515	52.6%
Total Wages	\$4,455,996,258	\$2,312,321,019	51.9%
Taxes	\$175,264,618	\$100,514,635	57.4%
Volume (2012)	3,104,115 mbf	2,565,212 mbf	82.6%

47% of Washington State forestlands are working forests, contributing to the Washington State economy through jobs, taxes and production of wood & paper products.

2012 Timber Harvest 3.1 bbf



Although only 37% of Washington State's forestlands are privately owned, timber harvest from privately owned forestland accounted for 71% of the annual statewide timber harvest in 2012.



Forest Industry Total Jobs Includes Direct, Indirect and Induced Employment

Data calculated using the Bureau of Economic Analysis Benchmark Series, RIMSII, Type II, Direct Effect multipliers. Forest2Market (2011 data)

Sources: Forest 2 Market economic study; University of Washington, Forestland Database, Luke Rogers www.ruraltech.org; WFPA Forest Facts & Figures; WA Dept. of Revenue; www.data.wa.gov

Contact: Cindy Mitchell at WFPA: (360) 352-1500 www.wfpa.org www.forestsandfish.com